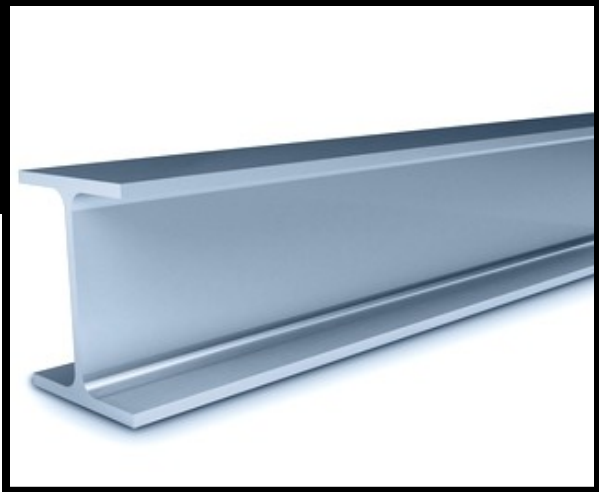


# Primary Metals Manufacturing

The primary metals manufacturing industry (NAICS 331) comprises establishments involved in transforming iron ore into basic metal products using metallurgical techniques. Establishments in this industry include iron & steel mills, smelters, and foundries. End products include metal pipes, tubes, sheets, wires, billets, and castings made of iron, steel, copper, aluminum, other metals, and alloys of various metals.



## Texas Industry Totals

Firms	402
Employment	21,320
Average Annual Wage	\$56,472
Total Capital Investments	\$363 million
Value Added Per Employee	\$290,450
Value of Shipments	\$12.6 billion

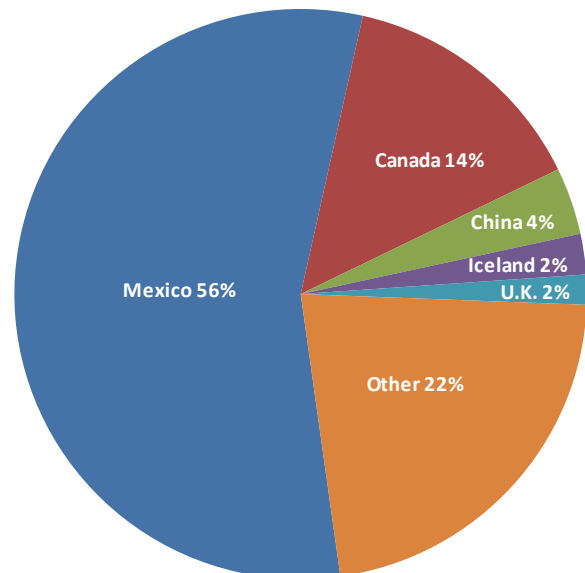
## How Texas Ranks in the U.S.

All Employees	No. 7
Production Workers	No. 6
Value Added	No. 6
Value of Shipments	No. 5
Total Capital Investments	No. 6

## Texas Exports

- Texas primary metals exports in 2011 were valued at \$7.6 billion – up from \$6.4 billion in 2010.
- In 2011, primary metals was Texas' 11<sup>th</sup> largest export sector.

## Top Export Markets



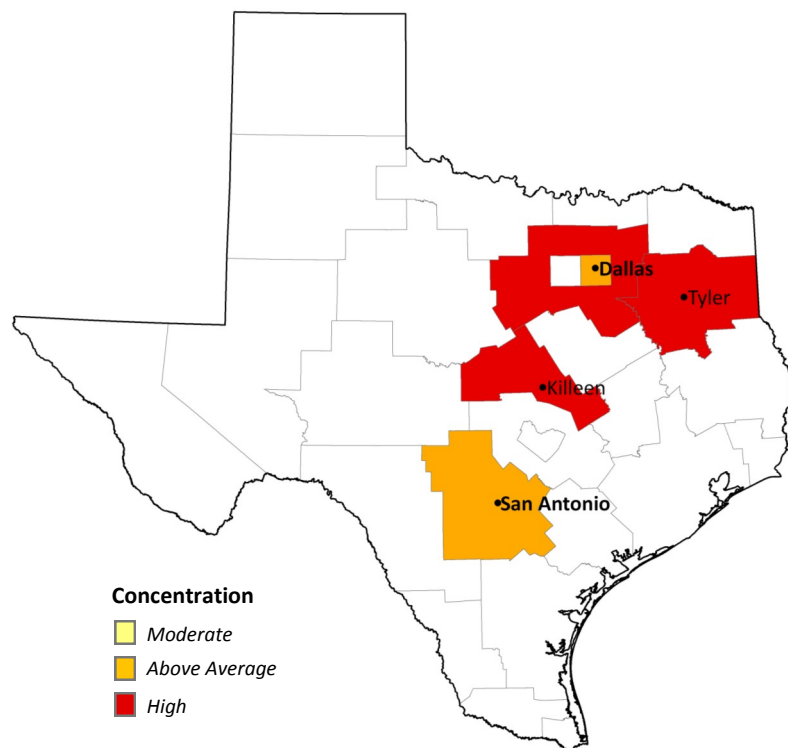
Sources: Texas Workforce Commission, U.S. Census Annual Survey of Manufactures, WISERTrade, Texas Manufacturers Register

## Major Industry Employers in Texas

Company	Location(s)	Products
Commercial Metals Co.	Seguin, etc.	Reinforced steel, rebar, billets, metal recycling
Nucor Corp.	Jewett, Grapeland	Steel bars, beams, & other building components
U.S. Steel Tubular Products	Houston, Bellville	Steel pipe & tubes
Freeport McMoran Copper & Gold	El Paso	Copper refining & copper wire rods
Western Extrusions Corp.	Carrollton	Aluminum Extrusions

## Regional Concentrations

The map at right identifies the state’s Workforce Development regions with above-average specializations in primary metals manufacturing. The highlighted regions are not the only areas in Texas where workers in this sector can be found, but rather represent areas with the greatest concentrations relative to the size of the local labor force. This industry is highly concentrated in North Central and East Texas.



## Recent Industry Trends

- Texas primary metals industry employment increased by 6.3% between Q3 2010 and Q3 2011.
- In 2011, Stainless Structural LLC announced it would build a new stainless steel bar manufacturing plant in Conroe, Texas. The Swiss company says the new facility will employ around 160 employees.
- In 2011, Encore Wire Corp. announced plans to build a new aluminum wire manufacturing plant in its hometown of McKinney, Texas. The \$25 million project will create up to 100 new manufacturing jobs.