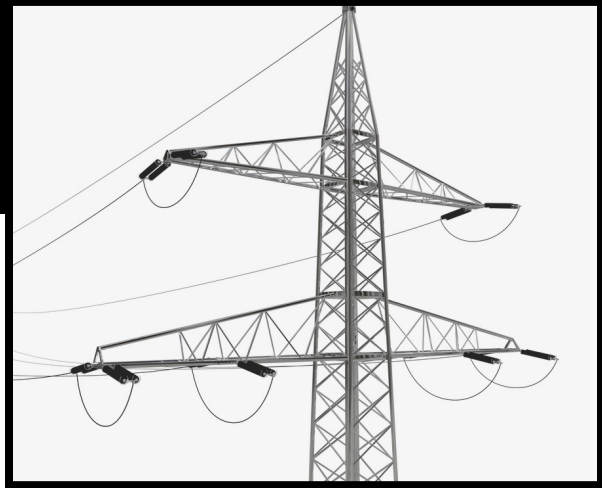


Electrical Equipment

The electrical equipment manufacturing industry (NAICS 335) produces equipment that generates, transports, and/or uses electricity. Industry subgroups include makers of lighting, small electrical devices, household appliances, batteries, insulated wire, electric generators, transformers, switches, fuses, and other electrical equipment.



Texas Industry Totals

Firms	447
Employment	17,849
Average Annual Wage	\$67,652
Total Capital Investments	\$94.6 million
Value Added Per Employee	\$174,989
Value of Shipments	\$5.5 billion

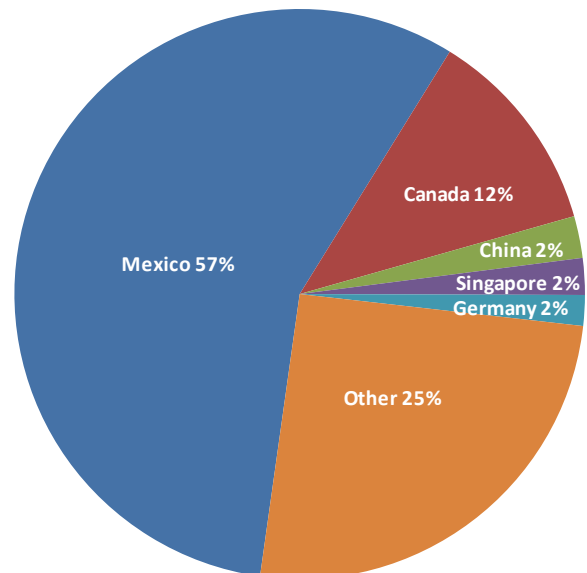
How Texas Ranks in the U.S.

All Employees	No. 6
Production Workers	No. 8
Value Added	No. 7
Value of Shipments	No. 7
Total Capital Investments	No. 9

Texas Exports

- Texas electrical equipment products exports in 2011 were valued at \$7.7 billion – up from \$7.0 billion in 2010.
- In 2011, electrical equipment was Texas' 10th largest export sector.

Top Export Markets



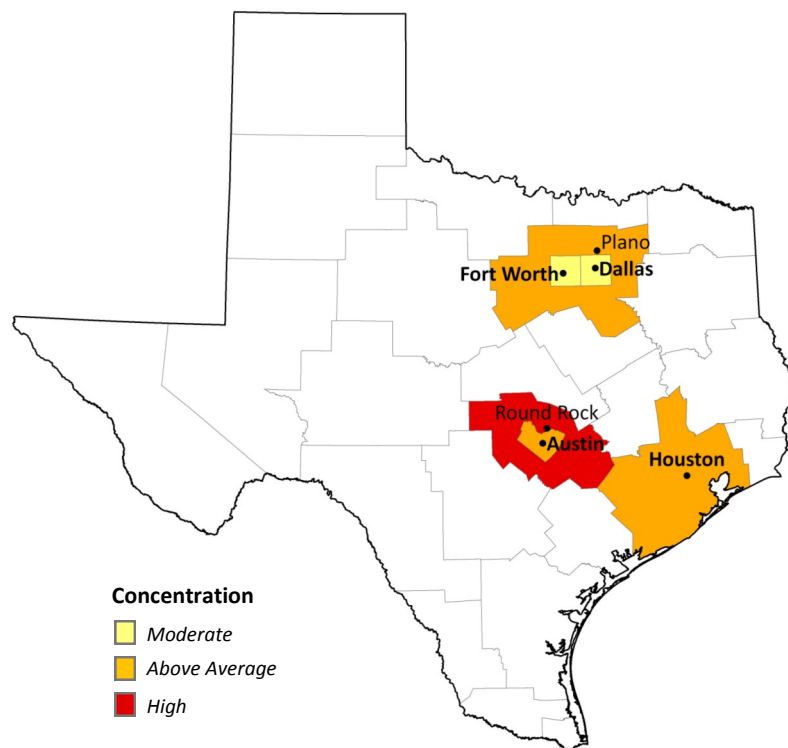
Sources: Texas Workforce Commission, U.S. Census Annual Survey of Manufactures, WISERTrade, Texas Manufacturers Register

Major Industry Employers in Texas

Company	Location(s)	Products
Powell Industries, Inc.	Houston	Electric switchgear
Toshiba International Corp.	Houston	Electric motors & other electrical equipment
TECO-Westinghouse Motor Co.	Round Rock	Electric motors & motor controls
Schneider Electric USA, Inc.	Carrollton	Relays and Industrial Controls
GE Energy Services	Houston	Electrical lighting, power & turbine generators

Regional Concentrations

The map at right identifies the state's Workforce Development regions with above-average specializations in electrical equipment manufacturing. The highlighted regions are not the only areas in Texas where workers in this sector can be found, but rather represent areas with the greatest concentrations relative to the size of the local labor force. This industry is highly concentrated in the DFW, Houston, and Austin regions.



Recent Industry Trends

- Texas electrical equipment industry employment increased by 5.2% between Q3 2010 and Q3 2011.
- In 2011, Japan-based Toshiba Corp. began hiring over 100 new workers for its expanded manufacturing plant in Houston, Texas. The plant will build hybrid electric motors for Ford Motor Company vehicles.
- In 2011, Kyle, Texas based Xtreme Power, Inc. was awarded a \$43 million contract to design, install, and operate a utility-scale energy storage system at the Notrees wind farm in West Texas.